

Project Name       Avera Sacred Heart Hospital  
                          Medical/Surgical Patient Room Renovation

Addendum #        2

Date                 6-17-14

Sent by             Jacob T. Bunde AIA  
                          Jacob.bunde@avera.org  
                          605-322-7802

## ARCHITECTURAL

### Specifications:

1. 093000 Tiling is attached
2. Spec Section 10-1001. There are to be no cubicle curtains in this project.
3. Door Hardware is attached

### Drawings:

1. See attached A2.0
2. Ceiling height clarification:
  - a. Patient Rooms    9'-0"
  - b. Corridor           8'-0"
  - c. Restrooms        8'-0"
3. Fire Ratings are to be maintained. Refer to T100
4. The owner will designate a construction elevator. Debris will need to be taken down to level 2 in covered carts than dumped into a truck to be removed. The truck cannot stay adjacent the loading dock for periods of time due to traffic. A dumpster can be placed in the parking lot in the far NW corner.
5. Sheetrock is only to be removed as needed. With the new head wall fur out, minimal sheetrock work will be required. New batt insulation will only be required if insulation is removed during demolition.
6. The exterior walls should only be opened up where req'd. If existing insulation is found unacceptable this will be considered an add to the project.
7. The hatch on the finish plans is the RF9 Luxury Vinyl Tile – Wood Plank – Accent Only.
8. Wall protection to be in small equipment alcoves in corridor only.
9. Existing handrail is to be reused.
10. Bumper guards to be on head wall only 6'-0" wide.
11. General Note on 1/A300 calls to replace the existing corridor suspended ceiling system and tile. All existing fixtures are to be reused in new ceilings.
12. The owner can provide an office space only for a field office. Space for a construction trailer - office and supplies can be found.
13. All blocking to be fire treated.
14. All patient room sink vanities are to receive uppers above.
15. Rooms 554 and 520 do not get new headwalls.
16. Shower curtains to be owner furnished and installed. The curtain tracks to be contractor provided and installed.
17. Existing roof completed by Guarantee Roofing out of Norfolk. 402-379-2107 Matt Fisher was the rep.

18. 419 and 554 and 520 are to receive new plumbing fixtures and finishes only. New floor drain is not part of these rooms.
19. The contractor is responsible for the fire watch during the construction hours as well as temporary alarms and firefighting equipment in that area. They need to be tested and documented monthly.
20. D100 shows a bathroom and exterior wall being removed in the NW corner corridor. This work has already be completed in a previous project.
21. The Head wall 6/A100 is to be field built, a simple 3 5/8" metal stud wall with Plastic Laminate as the finish material. The head wall is 8'-0" wide from floor to ceiling.
22. Toilet room accessories will be field coordinated with owner.
23. No shower seats are to be contractor provided. These will be mobile chairs owner provided and installed.
24. Public restroom still receives the 18" vertical grab bar
25. Current Elevator Maintenance contract with the Hospital is KONE. 605-336-1578 Wayne Mielke is the current contact.
26. We are alternating room WC colors with WC11 in on and WC12 in the next.
27. Isolation and Negative Air rooms 420, 452, 554, and 520 are to be ACT2 – Clean RM Climaplus Class 100. Refer to the spec not the finish schedule for ceiling tile designation.
28. Rooms 422, 424, 426, 428, 430, 452, 454, 456, and 458 are to receive a 1'-0" Deep X 3'-0" Wide Shelf 5'-0" AFF. In location shown per room in Patient RM 430.
29. Rooms 518 does not receive a new door. Rooms 519, and 554 restroom do receive new doors to be used in existing frame.

## MECHANICAL

### Drawings:

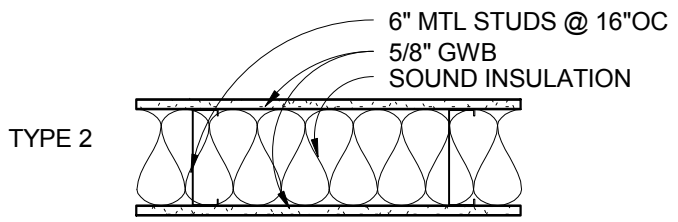
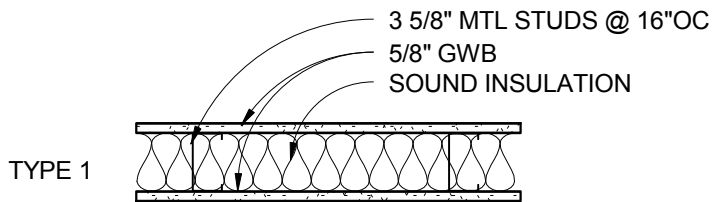
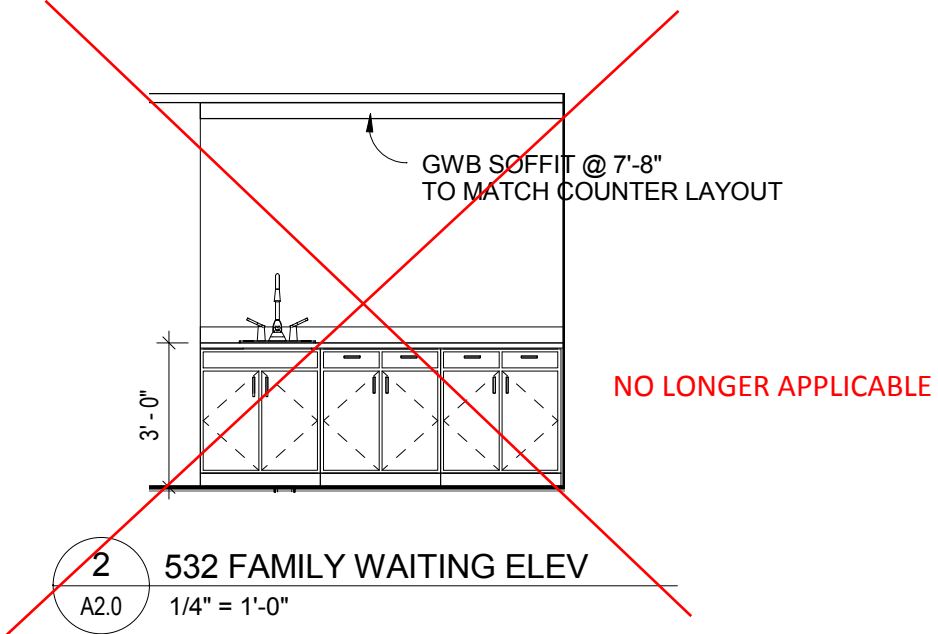
1. AHU prepurchase has been made. The supplier will get the unit to the site. Available for shipping 8-15-14

## ELECTRICAL

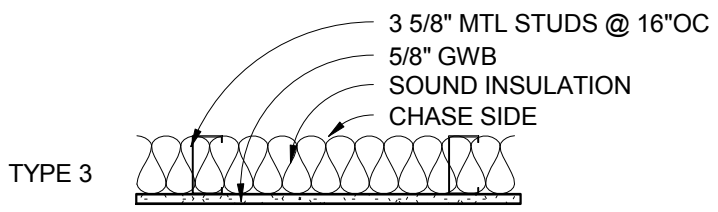
### Specifications:

## CIVIL


### Drawings:



NOTE:  
SEE SPECS FOR GREEN BOARD BEHIND WALL TILE.  
REFER TO CODE PLAN FOR RATINGS



1 WALL TYPES  
A2.0 1" = 1'-0"

	<p>SACRED HEART</p>	<p>ADDENDUM 2</p>	
		<p>Date</p>	<p>6-18-14</p>

# DOOR INDEX

Project ID:TE0328S

AVERA SACRED HEART 4TH & 5TH FLR REM (SPEC)

---

<u>Door Number</u>	<u>Heading #</u>
400	1
401	2
402	1
403	3
404	1
405	3
406	1
407	3
408	1
409	3
410	1
411	3
412	1
413	3
414	1
415	3
416	1
417	2
418	2
419	4
420	1
421	5
422	1
423	5
424	1
425	5
426	1
427	2
428	1
429	5
430	1
431	6
432	1
433	3
434	1
435	3
436	1
437	3
438	1
439	3

# DOOR INDEX

Project ID:TE0328S

AVERA SACRED HEART 4TH & 5TH FLR REM (SPEC)

---

<u>Door Number</u>	<u>Heading #</u>
440	1
441	3
442	1
443	3
444	1
445	3
446	1
447	3
448	1
449	2
450	7
451	5
452	7
453	5
454	1
455	5
456	1
457	5
458	1
460	8
500	1
501	2
502	1
503	3
504	1
505	3
506	1
507	3
508	1
509	3
510	1
511	3
512	1
513	3
514	1
515	3
516	1
517	3
520	1
532	2

# DOOR INDEX

Project ID:TE0328S

AVERA SACRED HEART 4TH & 5TH FLR REM (SPEC)

---

<u>Door Number</u>	<u>Heading #</u>
533	6
534	1
535	2
536	1
537	3
538	1
539	3
540	1
541	3
542	1
543	3
544	1
545	3
546	1
547	3
548	1
549	3
550	1
551	2
552	1
554	1

### Hardware Set 1

Each to receive:

3	EA	Hinge	T4A3786 4.5" x 4.5" US26D	MK
1	EA	Passage Latch	28 HPU15 ALP US32D	SA
1	EA	Wall Stop	WS406CCV 630	IV
1	EA	Gasketing	5050B -18'	NG

### Hardware Set 2

Each to receive:

1	Set	Pivot	EP-5J US26D	MK
1	EA	Privacy Lock	28 11U65 LJ US26D	SA
1	EA	Wall Stop	WS406CCV 630	IV
2	EA	Gasketing	5070B -84"	NG
1	EA	Combination Stop/Strike	CSS-9x5-3/4 OH US26D	MK

### Hardware Set 3

Each to receive:

1	Set	Pivot	EP-5J US26D	MK
1	EA	Privacy Lock	28 11U65 LJ US26D	SA
1	EA	Overhead Stop	414S 652	GJ
2	EA	Gasketing	5070B -84"	NG
1	EA	Combination Stop/Strike	CSS-9x5-3/4 OH US26D	MK

### Hardware Set 4

Each to receive:

3	EA	Hinge	TA2714 4.5" x 4.5" US26D	MK
1	EA	Privacy Lock	28 11U65 LJ US26D	SA
1	EA	Overhead Stop	454S 652	GJ

### Hardware Set 5

Each to receive:

3	EA	Hinge	TA2714 4.5" x 4.5" US26D	MK
1	EA	Privacy Lock	28 11U65 LJ US26D	SA
1	EA	Wall Stop	WS406CCV 630	IV

### Hardware Set 6

Each to receive:

3	EA	Hinge	TA2714 4.5" x 4.5" US26D	MK
1	EA	Storeroom/Closet Lock	28 11G04 LJ US26D	SA
1	EA	Wall Stop	WS406CCV 630	IV

### Hardware Set 7

Each to receive:

3	EA	Hinge	T4A3786 4.5" x 4.5" US26D	MK
1	EA	Passage Latch	28 HPU15 ALP US32D	SA
1	EA	Overhead Stop	906S 652	GJ
1	EA	Gasketing	5050B -18'	NG

**Hardware Set 8**

Each to receive:

3	EA	Hinge	T4A3786 4.5" x 4.5" US26D	MK
1	EA	Entry/Office Lock	28 11G05 LJ US26D	SA
1	EA	Wall Stop	WS406CCV 630	IV
1	EA	Gasketing	5050B -18'	NG



**SECTION 09-3000 - TILING**  
**PART 1 - GENERAL**

**1.1 SECTION INCLUDES**

- A. Ceramic tile.
- B. Interior thresholds.
- C. Metal transition strips.

**1.2 SUBMITTALS**

- A. Manufacturer's Product Data for each material used.
- B. Samples of full size tiles and grout in standard colors for selection.
- C. Full size verification Samples for each Type of approved tile, grout, and sealant, mounted on plywood or hardboard, 24 inches square.
- D. 6 inches long, full profile Sample of threshold with each required profile.
- E. Shop Drawings including:
  - 1. Tile patterns and locations of each Type of joint.
  - 2. Tile profile used for each Type of tile at inside corner, outside corner, base, termination at different material, and perimeter.
  - 3. Membrane manufacturer's details of each Type of joint in tile and substrates, showing dimensions and each Type of material.
- F. If more products of more than one manufacturer are used in an assembly, furnish statement of compatibility from each manufacturer.

**1.3 QUALITY ASSURANCE**

- A. Ceramic tile work shall comply with Standard Grade requirements of the American National Standard Specifications for Ceramic Tile, and applicable installation recommendations of the Tile Council of America, Inc., "Handbook for Ceramic Tile Installation".
- B. Provide materials of each Type from one manufacturer. Accessory items shall be manufactured or recommended by the tile manufacturer.

**1.4 DELIVERY, STORAGE, AND HANDLING**

- A. Deliver and store packaged materials in original containers with seals unbroken and labels intact until time of use.
- B. Store materials at 60 degrees Fahrenheit.

**1.5 SITE CONDITIONS**

- A. Maintain temperature in tiled areas of at least 60 degrees F for 7 days before, during, and 7 days after installation unless higher temperatures are required by referenced installation standards or manufacturer's instructions.
- B. Vent temporary heaters to exterior to prevent damage from carbon dioxide.

**1.6 MAINTENANCE STOCK**

- A. Leave remaining tile units from opened packages for maintenance stock. Package for storage, mark with building name and room number, and store where directed.
- B. Furnish additional tile from same production run for a total of 2 percent of installed quantity of each Type and pattern.

**PART 2 - PRODUCTS**

**2.1 PRODUCT COLORS AND STANDARDS**

- A. General: Specific products were selected for a coordinated color scheme, as indicated in Section 09-0601. Provide indicated products.

**2.2 TILE (CT)**

- A. General: ANSI A137.1 - American National Standard Specifications for Ceramic Tile, color and pattern selected.
- B. Performance characteristic, test: result.
  - 1. Water absorption, ASTM C373: 4.5 percent tile body, 0.2 percent finish.
  - 2. Breaking strength, ASTM C648: 520 pounds average.
  - 3. Static coefficient of friction, ASTM C1028:  
0.95 dry, 0.63 wet.

- C. Accessories: Coved base, base cap, wainscot cap, exterior corners, coved interior corners, bullnose edges at termination of tile, tapered transition tile as required to provide smooth finished edges and complete installation, same finish as adjacent field tile unless otherwise indicated.

### **2.3 SHOWER WATER RETAINER**

- A. Collapsible fin, 1-3/8 inches tall. Best Bath Systems, Boise, ID, WaterStopper or approved.

### **2.4 MEMBRANE TYPE WPC**

- A. Type: Seamless, cold-applied, liquid rubber waterproofing and crack suppression membrane. Bostik Hydroment Ultra-Set, Laticrete 9235, Laticrete Hydro Ban.

- B. Properties: Resistant to urine, brine solution, dilute acid solution, and dilute alkali solution.

- C. Accessory materials: Primers, sealers, bonding agents, and others as recommended by membrane manufacturer.

### **2.5 SETTING BED**

- A. Thinset: Latex modified portland cement, ANSI A118.4, non-sagging for wall assemblies. Laticrete 211 Crete Filler Powder, Laticrete 4237 Latex Thin Set Mortar Additive, or approved.

1. Compressive strength, ANSI A118.4: 5,000 psi minimum.
2. Bond strength, ANSI A118.4: 500 psi minimum.
3. Water absorption, ANSI A118.6: 4 percent maximum.
4. Smoke & Flame contribution factors, ASTM E84: 0.

- B. Adhesive: Organic, ANSI A136.1, Type I. Primer as recommended by adhesive manufacturer for conditions of use.

### **2.6 GROUT**

- A. Latex-portland cement grout: ANSI A118.7, polymer modified, preblended and prepackaged, approved by latex manufacturer for use with latex additive.

1. Joint width 1/8 inch or less: Unsanded.
2. Joint width greater than 1/8 inch: Sanded.

- B. Latex grout additive: Grout mixture as recommended by latex manufacturer. Laticrete 3701 or approved.

### **2.7 EXPANSION JOINTS**

- A. Backing rod: Preformed, compressible, non-extruding, non-staining plastic foam, compatible with sealants, primers, and other materials, recommended by manufacturer for conditions of use.

1. Vertical joints: Non-outgassing open cell polyurethane or polyolefin foam. ASTM C1330, Type B or Type O. Backer Rod Mfg. Co. Denver Foam, Nomaco Sof Rod, or approved.
2. Horizontal joints: Closed cell polyethylene foam. ASTM C1330, Type C.

- B. Sealant: ASTM C920. Primer as recommended by sealant manufacturer for substrates and conditions of use. VOC content 250 grams per liter maximum. Color as selected to match adjacent tile.

1. Floors, floor perimeter: Polyurethane, Type M, Grade P, Class 25, Uses T, M, A, O, as applicable. Shore A hardness 35 to 45.
2. Other surfaces: Silicone, mildew-resistant, Type S, Grade N, Class 25, Uses NT, G, A, O, as applicable, recommended by manufacturer for high humidity and extreme temperature applications.

### **2.8 ACCESSORIES**

- A. Expanded metal lath: ANSI A42.4, diamond mesh lath formed from galvanized steel sheet, 3.4 pounds per square yard. Flat for installation on studs or furring, self-furring for flat surfaces.

- B. Reinforcing mesh: Galvanized, welded wire fabric, ASTM A185; 2 by 2 inches by 0.62 inch diameter.

- C. Metal edge strip: Extruded profile sized for set tile thickness and adjoining floor finishes. SchluterSystems L.P., see Section 09-0601 for finish.

1. TS-1: Schluter-RENO-TK, aluminum, CT to Carpet.
2. Cove base trim: Schluter-DILEX-AHK, aluminum, finish as selected.

## **PART 3 - INSTALLATION**

### **3.1 PREPARATION**

- A. Comply with applicable parts of ANSI A108 series of installation standards.
- B. Apply a latex cementitious levelling coat where substrate irregularity is 1/4 inch or less.
- C. Remove existing materials to provide flat, smooth surface.
- D. Scarify or roughen painted or glossy surfaces; clean thoroughly.
- E. Etch concrete with acid, flush, and neutralize to provide suitable bond with thin set mortar.
- F. Install membrane Type WPC over all floors scheduled to receive ceramic tile. Comply with ANSI A108.13. Prime as recommended by membrane manufacturer. Do not install over expansion joints or structural movement cracks.
- G. After installing waterproof membrane, plug drains and flood with 2 inches of water for 24 hours. Repair leaks and damage and re-test. Repeat until no leaks are found.

### **3.2 INSTALLATION**

- A. Install tile using Tile Council of North America (TCNA) method scheduled, except use epoxy grout where indicated.
  - B. Clean tile backs and edges.
  - C. Notch bond coat in horizontal straight lines and set tile on freshly set bonding material while sliding tile back and forth at 90 degrees to notches in bonding material. Ensure corner and edges are fully supported by bonding material. Avoid lippage.
  - D. Backbutter tile larger than 12 inches square.
  - E. Ensure evenly distributed bond coverage of 95 percent.
  - F. Adjust tile and joint width before initial set, width as indicated. If not indicated:
    - 1. Wall tile: 1/16 inch.
    - 2. Floor tile: 3/16 inch.
  - G. Keep 2/3 of grout joint depth free of setting material.
  - H. Clean excess bonding material from surface prior to final set.
  - I. Sound tiles after setting materials have cured and replace hollow sounding tile before grouting.
  - J. Cut and drill tile without visibly marring patterns; grind exposed cut edges. Avoid use of tile less than half size. Fit closely to electrical outlets, piping, fixtures, and other penetrations so that plates, collars, or covers overlap tile.
  - K. Extend tile into recesses, and under and behind equipment and fixtures without interruptions unless otherwise indicated. Terminate neatly at obstructions, edges, and corners without disrupting pattern or alignment.
  - L. Align joints in both directions on each surface. Maintain uniform joint widths. For sheet-mounted tile, maintain sheet edge spacing same as joint spacing within sheet so sheet edges are not visible in finished work.
  - M. Lay out tile wainscots to next full tile beyond dimensions indicated.

### **3.3 CONTROL JOINTS**

- A. Install tile control joints straight where indicated. If not indicated, install at 12 feet o.c. in areas exposed to sunlight, 20 feet o.c. elsewhere.
- B. Install control joints where tile abuts perimeter walls, dissimilar flooring, curbs, columns, ceilings, penetrations, and other restraining surfaces.
- C. Install additional control joints directly above soft joints or expansion joints in substrate below. Maintain control joint directly through the mortar bed between tile and substrate below.
- D. Cut tile along joints to match floor tile pattern.
- E. Keep control joints free of setting materials.

### **3.4 GROUTING**

- A. Do not begin grouting until tile is firmly set, minimum 48 hours after installation.
- B. Comply with ANSI A108.6 and ANSI A108.10 as applicable to type of grout.

### **3.5 PROTECTION**

- A. Prohibit foot and wheel traffic from using newly tiled floors for 3 days after grouting is completed.

Protect installed tile work with kraft paper or other heavy covering during construction period to prevent staining or damage.

- B. Before final inspection, remove protective coverings and rinse tile surfaces.

### **3.6 SCHEDULE**

- A. Floors in toilet rooms: TCNA Method F122.
- B. Other floors: TCNA Method F113.
- C. Walls in toilets: TCNA Method W244C, with building wrap as moisture resistant membrane.
- D. Other walls: TCNA Method W242.
- E. Movement joints: As indicate in TCNA Method EJ171 for surrounding conditions.

### **3.7 GROUT SCHEDULE**

- A. Latex-portland cement grout: All other locations.

**END OF SECTION**